

City Signal Plans

S11362

WORK ORDER

S21079

SIGNAL

Delaware & Frankford Avenues

District 2

Prepared by Patrick Callahan	Date 3/12/2013	WORK COMPLETED by	Date
Approved by <i>[Signature]</i>	Date 3/12/13	INSPECTED by	Date

#	PHASE/INTERVALS	2 + 5 + 2P				2 + 6 + 6P + 2P				Trolley				4+4P+8				Minimums			Max	Passage		
		1	2	3	4	5	6	7	8	9	10	11	12	13	14	15	16	17	Flash	G			M	FH
2	Norrbound Delaware Ave.	G	G	G	G	G	Y	R	R	R	R	R	R	R	R	R	R	R	Y	14				60
5	NB Delaware Ave. Left Turns	<G/G	<Y/G	G	G	G	Y	R	R	R	R	R	R	R	R	R	R	R	OFF	3				24
6	Southbound Delaware Ave.	R	R	R	R	R	G	G	Y	R	R	R	R	R	R	R	R	R	Y	14				55
1	SB Delaware Ave LT	<R	<R	<R	<R	<R	<R	<G	<Y	<R	<R	<R	<R	<R	<R	<R	<R	<R	OFF	3				11
4	Frankford Avenue	R	R	R	R	R	R	R	R	R	R	R	R	R	R	R	R	R	R	22				31
8	Frankford Avenue	R	R	R	R	R	R	R	R	R	R	R	R	R	R	R	R	R	R	22				
T	Trolley Turn										I													
P2	Delaware Ave. PEDS.	M	M	M	M	FH	H	H	H	H	H	H	H	H	H	H	H	H	OFF	7	14			
P6	Delaware Ave. PEDS.	H	H	H	H	M	FH	FH	H	H	H	H	H	H	H	H	H	H	OFF	7	14			
P4	Frankford Ave. PEDS.	H	H	H	H	H	H	H	H	H	H	H	H	M	FH	H	H	H	OFF	7	22			
	Fixed		4.5	1.5		14	4.5	1.5	4.5	1.5				22	4	3	61	Seconds						
	Program 5	16	4.5	1.5	24	14	4.5	1.5	11	4.5	1.5		8	22	4	3	120		1	0:01	5	119	1-7	
	Program 6	24	4.5	1.5	16	14	4.5	1.5	10	4.5	1.5		9	22	4	3	120		2	6:00	5	119	1-5	
	Trolley Preemption	19	4.5	1.5	13	14	4.5	1.5	7	4.5	1.5		7	22	4	3	120		3	10:00	5	119	1-5	
																				4	15:00	6	2	1-5
																				5	19:00	5	119	1-5
																				6	10:00	5	119	6
																				7	19:00	5	119	6

Instructions: Change timings to as specified above. Sync phase is 2. Phases 1 and 5 actuated.
 Install trolley pre-emption to work on all programs when trolley pre-empts. Return to normal operations when trolley clears.

WORK ORDER
S11364

Prepared by
Patrick Callahan
Approved by
PC

Date
12/19/2012
Date
2/8/13

WORK COMPLETED by
M Dupre
INSPECTED by
PC

Date
4-17-13
Date

District 2

Columbia & Delaware Avenues

SIGNAL

#	PHASE/INTERVALS	2 + 6 + 2P + 6P								4 + 8 + 4P + 8P								Flash	G	M	FH	Minimums	Max	Passage			
		1	2	3	4	5	6	7	8	9	10	11	12	13	14	15											
		G	G	Y	R	R	R	R	R	R	R	R	R	R	R	R											
2	NB Delaware Avenue	G	G	Y	R	R	R	R	R	R	R	R	R	R	R	Y	6										
5	SB Delaware Avenue	G	G	Y	R	R	R	R	R	R	R	R	R	R	R	Y	6										
1	EB Columbia Avenue	R	R	R	R	G	G	Y	R	R	R	R	R	R	R	R	25										
7	WB Columbia Avenue	R	R	R	R	G	G	Y	R	R	R	R	R	R	R	R	25										
3																											
P2	Delaware Ave. Ped (E. Crosswalk)	M	FH	H	H	H	H	H	H	H	H	H	H	H	H	OFF				7	6						
P6	Delaware Ped (W. Crosswalk) *	M	FH	H	H	H	H	H	H	H	H	H	H	H	H	OFF				7	6						
P4	Columbia Ave. Ped (S. Crosswalk)	H	H	H	H	M	FH	H	H	H	H	H	H	H	H	OFF				7	25						
P8	Columbia Ave. Ped (N. Crosswalk)	H	H	H	H	M	FH	H	H	H	H	H	H	H	H	OFF				7	25						
	Fixed	6	4.5	1.5	1.5	25	3.5	3.5	3.5	3.5	3.5	3.5	3.5	3.5	3.5	44	Seconds										
	Program 5	67	6	4.5	1.5	9	25	3.5	3.5	3.5	3.5	3.5	3.5	3.5	120	120											
	Program 6	66	6	4.5	1.5	10	25	3.5	3.5	3.5	3.5	3.5	3.5	3.5	120	120											

Instructions: Change timings to as specified above. Sync is 2+6.

* = Crosswalks for crossing Allen Street and for crossing Columbia Avenue, west of Delaware Avenue

DIST. ENGR.

MOVEMENT, SEQUENCE, AND TIMING DIAGRAM

PHASE	2+8	8
1-2,3+5,6	0 1 2 3 4 5 6	7 8
7,8	R R R	G Y R
FIXED	3 2	4 2
MINIMUM	59	71
PASSAGE		31
MAXIMUM**		20
PROGRAM 4	59	20
PROGRAM 5	59	20
PROGRAM 6	59	20
MEMORY	NE	L

** MAXIMUM GREEN FOR TIME OF DAY SETTINGS

10/4 1:10 PM
2781259
10/10 - 10/18
1:10 PM

DISTRICT	COUNTY	ROUTE	SECTION	SHEET
5-0	PHILADELPHIA	2001	B02	15 OF 16
CITY OF PHILADELPHIA				
REVISION NUMBER	REVISIONS			DATE

TRAFFIC SIGNAL NOTES

DO NOT MODIFY INSTALLATION WITHOUT PRIOR WRITTEN APPROVAL.

ALL SIGNS AND PAVEMENT MARKINGS INDICATED ARE PART OF THE PERMIT. INSTALL AND MAINTAIN IN ACCORDANCE WITH PUBLICATION 68.

POST MOUNTED SIGNALS: INSTALL WITH A MINIMUM SIGNAL CLEARANCE OF 18 FEET ABOVE ROADWAY; RIGIDLY MOUNT, TOP AND BOTTOM; AND, EQUIP WITH BACKPLATES. PROVIDE A MINIMUM HORIZONTAL DISTANCE OF 8 FEET BETWEEN SIGNALS AS MEASURED AT RIGHT ANGLES TO THE APPROACH.

OVERHEAD SIGNALS: PROVIDE A MINIMUM SIGNAL HEAD CLEARANCE OF 18 FEET ABOVE ROADWAY; RIGIDLY MOUNT, TOP AND BOTTOM; AND, EQUIP WITH BACKPLATES. PROVIDE A MINIMUM HORIZONTAL DISTANCE OF 8 FEET BETWEEN SIGNALS AS MEASURED AT RIGHT ANGLES TO THE APPROACH.

CONSULT WITH LOCAL OFFICIALS AND UTILITIES TO RESOLVE CONFLICTS PRIOR TO CONSTRUCTION.

DETERMINE WITH A PENNDOT REPRESENTATIVE, THE EXACT LOCATION OF DETECTORS PRIOR TO INSTALLATION.

COMPLY WITH PROVISIONS OF ACT 38 FOR PREVENTION OF DAMAGE TO UNDERGROUND UTILITIES, EFFECTIVE DECEMBER 12, 1991.

LEGEND

- 25' EXISTING MAST ARM
- 25' NEW MAST ARM
- EXISTING SIGNAL HEAD
- NEW VEHICULAR SIGNAL HEAD
- RELOCATED EXISTING VEHICULAR SIGNAL HEAD
- NEW PEDESTRIAN SIGNAL HEAD
- EXISTING STRAIN POLE/C-POST
- NEW STRAIN POLE/C-POST
- EXISTING SIGN WITH IDENTIFYING LETTER
- NEW SIGN WITH IDENTIFYING LETTER
- PEDESTRIAN PUSHBUTTON
- TRAFFIC SIGNAL SUPPORT
- LOOP DETECTOR
- JUNCTION BOX

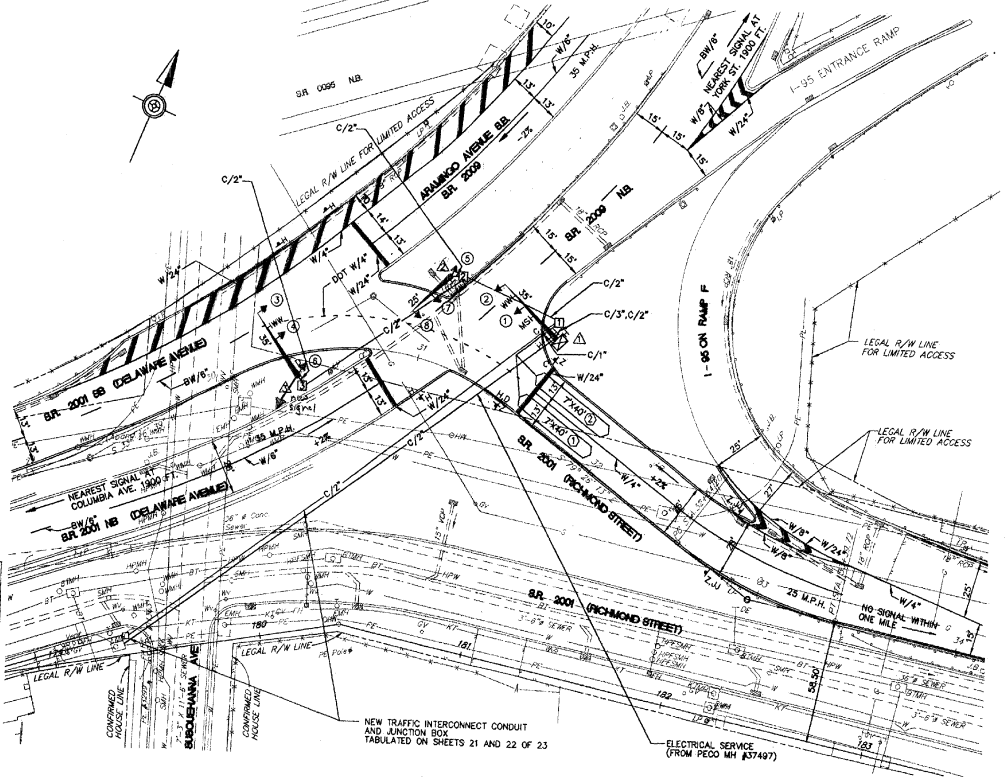
- CURB CUT**
- C.C. Controller Assembly
 - C/2- Existing conduit
 - C/2- Conduit/Size
 - W/4" Solid White Line/Width
 - BW/4" Broken White Line/Width
 - B/4" Solid Yellow Line/Width
 - DY/4" Broken Yellow Line/Width
 - DOT W/4" Double Solid Yellow Line/Width
 - 150/14 Dotted White Line/Width
 - 12P/13 # Pairs/AWG Wire Size

County: PHILADELPHIA
Municipality: PHILADELPHIA
Intersection: DELAWARE AVENUE AND ARAMINGO AVENUE

Revised by: *Charles Hammond* 1/1/99
Municipal Official Date
Recommended by: *James W. Charles* 1/14/99
District Traffic Engineer Date



AS-BUILT



SIGN TABULATION

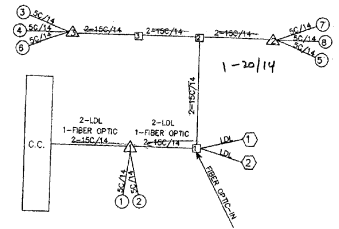
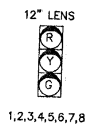
PLAN SYMBOL	SERIES NUMBER	SIZE	REMARKS
C	R6-1L	36" X12"	ONE WAY LEFT
D	R6-1R	36" X12"	ONE WAY RIGHT
H	R9-3	18" X18"	NO PEDESTRIAN CROSSING
Z	R3-BLLR	30" X30"	LANE USE CONTROL, LEFT/LEFT - RIGHT
MS	-	96" X16"	RICHMOND ST
MU	-	96" X28"	<-DELAWARE AV/ARAMINGO AV ->
NW	R3-3	36" X36"	NO TURNS

PROGRAMS

PROGRAM NUMBER	CYCLE LENGTH	OFF SET	OFF SET							
			RACE	CALLOWELL	SP. GREEN	FOUN	FRANKFORD	SPARKFRANKLIN	COLUMBIA	ARAMINGO
1	90	0	28.5	20.5	27.5	66.5	76.5	37.4	71.5	
2	90	0	24.5	28.5	37.5	71.1	86.4	23.5	67.5	
3	90	0	32.8	11.5	27.5	79.5	70.5	41.7	75.8	
4	90	0	78.9	16.6	42.8	79.5	63.3	78.5	15.3	
5	90	0	69.5	9.2	28.4	79.5	64.6	75.1	13.1	
6	90	0	3.5	34.4	55.4	79.5	4.1	8.3	38.5	

PROGRAM 1, 2, AND 3, SEE SPECIAL PROVISIONS
PROGRAM 4 RUNS FROM 9:00 AM TO 3:00 PM, 8:00 PM TO 7:00 AM (OFF PEAK)
PROGRAM 5 RUNS FROM 7:00 AM TO 9:00 AM
PROGRAM 6 RUNS FROM 3:00 PM TO 6:00 PM

SIGNAL INDICATIONS



T:\VING-10\VING\INDIRECT\DEL-ARA.DWG 10/20/98 JTE

SCALE: 1"=25'

MOVEMENT, PHASING AND SEQUENCE CHART

PHASE	6						8					
1,2	G	Y	R	R	R	R	R	R	R	G	Y	R
3,4	R	R	R	R	R	R	G	Y	R	R	R	R
5	R	R	R	R	R	R	G	Y	R	R	R	R
FIXED												
MINIMUM	7						7					
PASSAGE							3					
MEMORY												
MAX RECALL												
NON-LOCKING												
PROGRAM 1	61	3	2				19	3	2			
PROGRAM 2	54	3	2				26	3	2			
CYCLE												
90 SEC												
90 SEC												

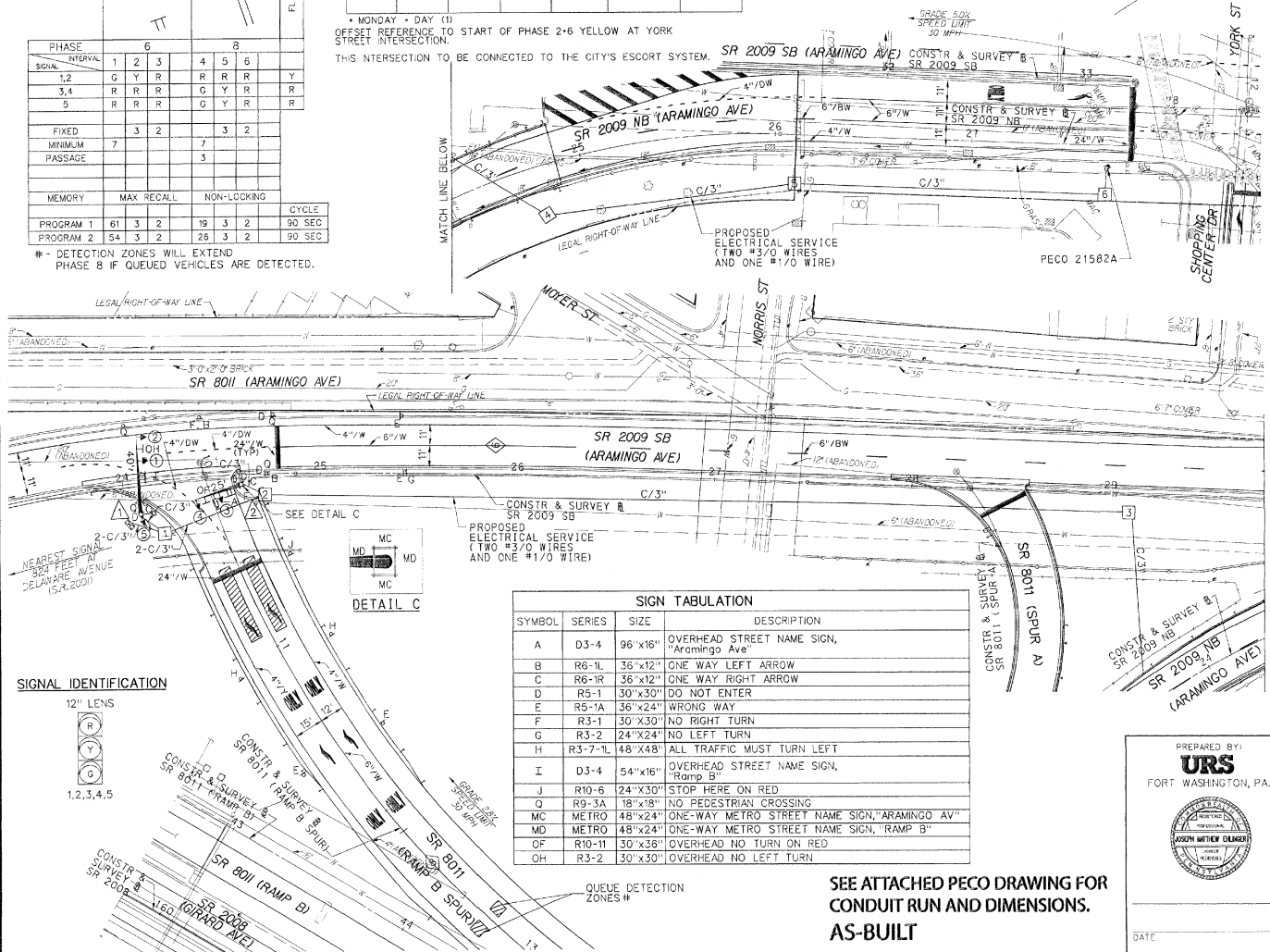
- DETECTION ZONES WILL EXTEND PHASE 8 IF QUEUED VEHICLES ARE DETECTED.

WEEKLY PROGRAM CHART

EVENT	DAY	TIME	CYCLE	OFFSET	PROGRAM	REMARKS
1	1-7	06:00	90	34	1	
2	1-7	14:00	90	61	2	

* MONDAY - DAY (1)
OFFSET REFERENCE TO START OF PHASE 2+6 YELLOW AT YORK STREET INTERSECTION.

THIS INTERSECTION TO BE CONNECTED TO THE CITY'S ESCORT SYSTEM.



SIGN TABULATION

SYMBOL	SERIES	SIZE	DESCRIPTION
A	D3-4	96"x16"	OVERHEAD STREET NAME SIGN, "Aramingo Ave"
B	R6-1L	36"x12"	ONE WAY LEFT ARROW
C	R6-1R	36"x12"	ONE WAY RIGHT ARROW
D	R5-1	30"x30"	DO NOT ENTER
E	R5-1A	36"x24"	WRONG WAY
F	R3-1	30"x30"	NO RIGHT TURN
G	R3-2	24"x24"	NO LEFT TURN
H	R3-7-1L	48"x48"	ALL TRAFFIC MUST TURN LEFT
I	D3-4	54"x16"	OVERHEAD STREET NAME SIGN, "Ramp B"
J	R10-6	24"x30"	STOP HERE ON RED
Q	R9-3A	18"x18"	NO PEDESTRIAN CROSSING
MC	METRO	48"x24"	ONE-WAY METRO STREET NAME SIGN, "ARAMINGO AV"
MD	METRO	48"x24"	ONE-WAY METRO STREET NAME SIGN, "RAMP B"
OF	R10-11	30"x36"	OVERHEAD NO TURN ON RED
OH	R3-2	30"x30"	OVERHEAD NO LEFT TURN

SEE ATTACHED PECO DRAWING FOR CONDUIT RUN AND DIMENSIONS. AS-BUILT

DISTRICT	COUNTY	ROUTE	SECTION	SHEET
6-0	PHILADELPHIA	0095	GRD	3 of 6
CITY OF PHILADELPHIA				
REVISION NUMBER	REVISIONS	DATE	BY	
<p>TRAFFIC SIGNAL NOTES</p> <p>DO NOT MODIFY INSTALLATION WITHOUT PRIOR WRITTEN APPROVAL.</p> <p>ALL SIGNS AND PAVEMENT MARKINGS INDICATED ARE PART OF THE PERMIT. INSTALL AND MAINTAIN IN ACCORDANCE WITH PUBLICATION 66 AND PUBLICATION 238.</p> <p>POST MOUNTED SIGNALS: INSTALL WITH A MINIMUM SIGNAL HEAD CLEARANCE OF 2 FEET BEHIND FACE OF CURB OR EDGE OF SHOULDER AND 8 FEET ABOVE SIDEWALK OR PAVEMENT GRADE.</p> <p>OVERHEAD SIGNALS: INSTALL WITH A MINIMUM SIGNAL HEAD CLEARANCE OF 2 FEET BEHIND FACE OF CURB OR EDGE OF SHOULDER. PROVIDE A MINIMUM SIGNAL HEAD CLEARANCE OF 16 FEET ABOVE ROADWAY. RIGIDLY MOUNT, TOP AND BOTTOM AND EQUIP WITH BACKPLATES. PROVIDE A MINIMUM HORIZONTAL DISTANCE OF 8 FEET BETWEEN SIGNALS AS MEASURED AT RIGHT ANGLES TO THE APPROACH.</p> <p>DETERMINE WITH A PENDOT REPRESENTATIVE THE EXACT LOCATION OF DETECTORS PRIOR TO INSTALLATION.</p> <p>CONSULT WITH LOCAL OFFICIALS AND UTILITIES TO RESOLVE CONFLICTS PRIOR TO CONSTRUCTION.</p> <p>COMPLY WITH PROVISIONS OF ACT 81 FOR PREVENTION OF DAMAGE TO UNDERGROUND UTILITIES DATED NOVEMBER 29, 2006.</p>				
<p>LEGEND</p> <ul style="list-style-type: none"> ▲ 25' - Most Arm with Identifying Length ▲ 25' - Signal Head with Identifying Number ▨ - Video Detection Zone ◇ - Phase Number A+ - Sign with Identifying Letter on Signal ◻ - Video Camera A- - Ground Mounted Sign with Identifying Letter ⊞ - Luminaire Arm ⊞ - CONTROLLER ASSEMBLY ⊞ - JUNCTION BOX WITH NUMBER C/2" - CONDUIT/SIZE 6"/W - WIDTH / SOLID WHITE LINE 4"/Y - WIDTH / SOLID YELLOW LINE 6"/BW - WIDTH / BROKEN WHITE LINE 4"/DY - WIDTH / DOUBLE YELLOW LINE 4"/DTW - WIDTH / DOTTED WHITE LINE 4"/DW - WIDTH/DOTTED EXTENSION LINE, WHITE 				
<p>PREPARED BY: URS FORST WASHINGTON, PA.</p> <p>DATE: _____</p> <p>REVIEWED: _____</p> <p>MUNICIPAL OFFICIAL: _____ DATE: _____</p> <p>RECOMMENDED: _____</p> <p>DISTRICT TRAFFIC ENGINEER: _____ DATE: _____</p> <p>SCALE: 25 0 25 50 SCALE IN FEET</p>				

Prescribed Timing Sequence
Aramingo Ave. & York Streets
90 Second Cycle
Established 12/1/98

Non Actuated

Aramingo Ave.	G	Y	R	R	R	R	R	R
WB York	R	R	R	G/G< G	G	Y	R	
EB York	R	R	R	R	R	G	Y	R
PED	DW	DW	DW	DW	DW	DW	DW	DW
Seconds	50	4	2	7	3	19	3	2

Actuated

Aramingo Ave.	G	Y	R	R	R	R	R	R	R	R
WB York	R	R	R	R	R	G/G< G	G	Y	R	
EB York	R	R	R	R	R	R	R	G	Y	R
PED	DW	DW	DW	W	FW	DW	DW	DW	DW	DW
Seconds	29	4	2	7	25	5	3	10	3	2

WEEKLY PROGRAM CHART

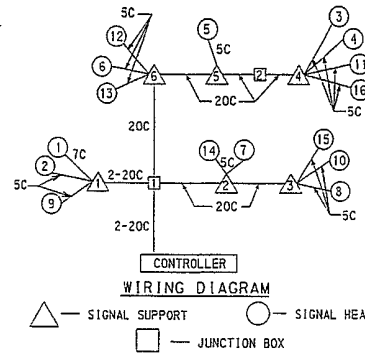
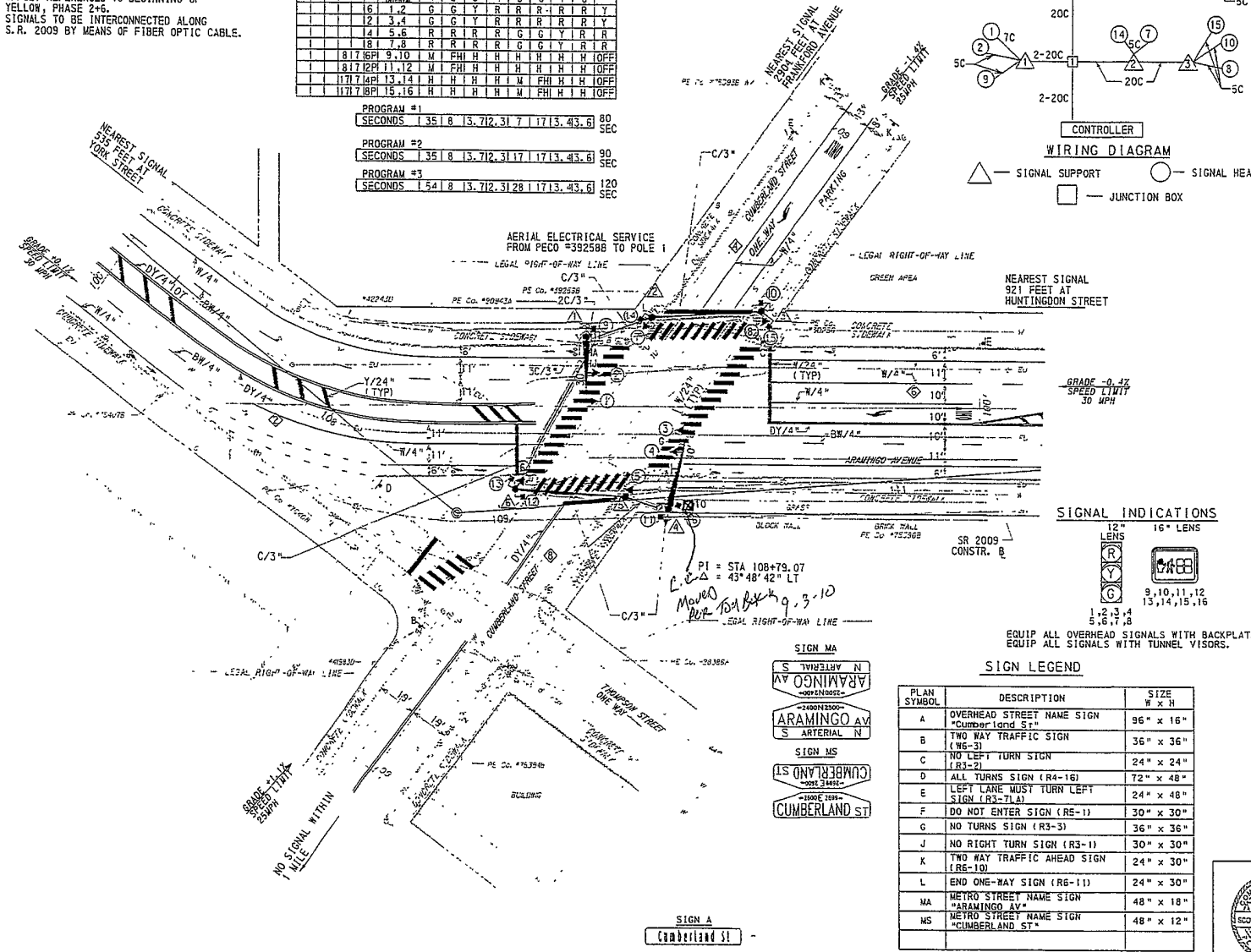
PLAN	WK	DAY	HR	MIN	PR	OFF	SET	CYCLE
1	1	1	52	5	100	1	179	SEC 180 SEC
2	1	1	52	11	100	1	179	SEC 180 SEC
3	1	1	52	17	100	2	179	SEC 180 SEC
4	1	1	52	23	100	3	1110	SEC 120 SEC
5	1	1	52	29	100	4	179	SEC 180 SEC

OFFSET REFERENCED TO BEGINNING OF YELLOW, PHASE 2+6. SIGNALS TO BE INTERCONNECTED ALONG S.R. 2009 BY MEANS OF FIBER OPTIC CABLE.

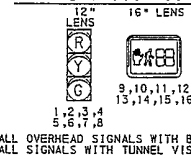
PHASING, TIMING AND COLOR SEQUENCE CHART

EXT. NO.	LINK	LINK UTIL.	LINK UTIL. GA.	PHASE	2 + 6	4	5	6	7	8	EMERGENCY FLASH
				1	2	1	4	5	6	7	1
				2	3	4	5	6	7	8	2
				3	4	5	6	7	8	9	3
				4	5	6	7	8	9	10	4
				5	6	7	8	9	10	11	5
				6	7	8	9	10	11	12	6
				7	8	9	10	11	12	13	7
				8	9	10	11	12	13	14	8
				9	10	11	12	13	14	15	9
				10	11	12	13	14	15	16	10
				11	12	13	14	15	16	17	11
				12	13	14	15	16	17	18	12

PROGRAM #1	SECONDS	35	8	13.712	31	7	17	13.43.6	90	SEC
PROGRAM #2	SECONDS	35	8	13.712	31	17	13.43.6	90	SEC	
PROGRAM #3	SECONDS	54	18	13.712	31	28	17	13.43.6	120	SEC



SIGNAL INDICATIONS



SIGN LEGEND

PLAN SYMBOL	DESCRIPTION	SIZE W x H
A	OVERHEAD STREET NAME SIGN (CUMBERLAND ST)	96" x 16"
B	TWO WAY TRAFFIC SIGN (W6-31)	36" x 36"
C	NO LEFT TURN SIGN (R4-3)	24" x 24"
D	ALL TURNS SIGN (R4-16)	72" x 48"
E	LEFT LANE MUST TURN LEFT SIGN (R3-TLA)	24" x 48"
F	DO NOT ENTER SIGN (R5-1)	30" x 30"
G	NO TURNS SIGN (R3-3)	36" x 36"
J	NO RIGHT TURN SIGN (R3-1)	30" x 30"
K	TWO WAY TRAFFIC AHEAD SIGN (R5-10)	24" x 30"
L	END ONE-WAY SIGN (R6-11)	24" x 30"
MA	METRO STREET NAME SIGN (ARAMINGO AV)	48" x 18"
MS	METRO STREET NAME SIGN (CUMBERLAND ST)	48" x 12"



DISTRICT	COUNTY	ROUTE	SECTION	SHEET
6-0	PHILADELPHIA	2009	C12	9 OF 74
CITY OF PHILADELPHIA				
REVISION NUMBER	REVISIONS	DATE	BY	

GENERAL NOTES

DO NOT MODIFY INSTALLATION WITHOUT PRIOR WRITTEN APPROVAL.

ALL SIGNS AND PAYMENT MARKINGS INDICATED ARE PART OF THE PERMIT. INSTALL AND MAINTAIN IN ACCORDANCE WITH PUBLICATIONS 09-111, 212 & 236.

POST MOUNTED SIGNALS: INSTALL WITH A MINIMUM SIGNAL HEAD CLEARANCE OF 2 FEET BEHIND FACE OF CURB OR THE EDGE OF THE SHOULDER; AND 8 FEET ABOVE SIDEWALK OR PAVEMENT GRADE.

OVERHEAD SIGNALS: INSTALL WITH A MINIMUM SIGNAL HEAD CLEARANCE OF 2 FEET BEHIND FACE OF CURB OR THE EDGE OF THE SHOULDER. PROVIDE A MINIMUM VERTICAL CLEARANCE OF 16 FEET ABOVE THE ROADWAY; RIGIDLY MOUNT, TOP AND BOTTOM; AND EQUIP WITH BACKPLATES. PROVIDE A MINIMUM HORIZONTAL DISTANCE OF 8 FEET BETWEEN SIGNALS AS MEASURED AT RIGHT ANGLES TO THE APPROACH.

DETERMINE WITH A PENNDOT REPRESENTATIVE, THE EXACT LOCATION OF TRAFFIC SIGNAL SUPPORTS AND DETECTORS PRIOR TO INSTALLATION.

CONSULT WITH LOCAL OFFICIALS AND UTILITIES TO RESOLVE CONFLICTS PRIOR TO CONSTRUCTION.

COMPLY WITH THE PROVISIONS OF ACT 181, FOR PREVENTION OF DAMAGE TO UNDERGROUND UTILITIES, EFFECTIVE DATE MARCH 29, 2007.

ALL DESIGNERS AND CONTRACTORS UTILIZING THIS PLAN AND THE INFORMATION CONTAINED THEREON ARE CAUTIONED TO COMPLY WITH THE REQUIREMENTS OF PENNSYLVANIA ACT 181, ENTITLED "UNDERGROUND UTILITY LINE PROTECTION LAW". ANY INFORMATION APPEARING ON THESE DRAWINGS AS TO THE UNDERGROUND LINES OF A USER, SUCH AS A PUBLIC UTILITY, HAS BEEN INCORPORATED HEREON PURSUANT TO SAID PENNSYLVANIA ACT 181. THIS INFORMATION HAS BEEN PROVIDED BY THE RESPECTIVE USERS IN RESPONSE TO PA ONE CALL SYSTEM REFERENCE SERIAL = 23955331 PER PHONE CALL ON 09/10/2008.

ALL LOCATIONS OF UNDERGROUND UTILITIES ARE APPROXIMATE ONLY AND MUST BE FIELD VERIFIED PRIOR TO CONSTRUCTION. KCI TECHNOLOGIES, INC. HAS NOT MADE AN INDEPENDENT DETERMINATION WITH RESPECT TO THE ACCURACY OR COMPLETENESS OF SUCH INFORMATION AND SPECIFICALLY DISCLAIMS ANY WARRANTY OR REPRESENTATION AS TO THE ACCURACY OF SUCH INFORMATION.

CALL BEFORE YOU DIG
PENNSYLVANIA LAW REQUIRES
3 WORKING DAYS NOTICE FOR
CONSTRUCTION PHASE AND 10 WORKING
DAYS IN DESIGN STAGE-STOP CALL
PENNSYLVANIA ONE CALL SYSTEM, INC.

1-800-242-1776

PENNSYLVANIA DEPARTMENT OF TRANSPORTATION
ENGINEERING DISTRICT 6-0

COUNTY:	PHILADELPHIA
MUNICIPALITY:	CITY OF PHILADELPHIA
INTERSECTION:	ARAMINGO AVENUE (SR 2009) AND CUMBERLAND STREET
REVISED:	[Signature] 8/3/09 MUNICIPAL OFFICIAL DATE
RECOMMENDED:	[Signature] 7/20/09 DISTRICT TRAFFIC ENGINEER DATE
<p>SCALE IN FEET</p>	

E. Girard Ave. & Richmond St.

WORK ORDER

S11314

Prepared by

[Signature]

Date

2/22/12

WORKS COMPLETED by

[Signature]

Date

3/18/2012

Approved by

[Signature]

Date

2/22/12

INSPECTED by

[Signature]

Release date

SIGNAL

#	Phase Movements	2+6+P4 Richmond St. & Crossing Girard Ave. on Westside								4+P6 EB Girard Ave. & Crossing Richmond St. on Southside			Flash	Minimums			Maximums			Extension
		1	2	3	4	5	6	7	8	G	M	FH		G	M	FH				
2	NB Richmond St	G	G	Y	R	R	R	R	R	R	R	R	R	Y						
5	SB Richmond St	G	G	Y	R	R	R	R	R	R	R	R	R	Y						
4	EB Girard Ave.	R	R	R	R	G	G	Y	R					R						
P2																				
P6	Corssing Girard Ave.	M	FH	H	H	H	H	H	H	H	H	H	H	OFF						
P4	Crossing Richmond St.	H	H	H	H	M	FH	H	H					OFF						
P8																				
Program 1 (sec)		40.0	10.0	3.0	2.0	12.0	18.0	3.0	2.0					90.0	Sec					

Time of Day Plan			
Event	Day	Time	Remarks
1	1-7	0:00	
		90	
		1	
		0	

Instructions

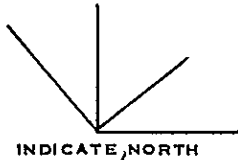
Install timings.



SIGNAL SHOP

PE CAL 1968 OCT 15 8-2

WORK ORDER 3361	LOCATION LEHIGH AVE. & RICHMOND ST.				INVESTIGATION DIST.
	INVESTIGATED BY RSL/JB	DATE 10/9/68	WORK COMPLETED BY H. J. [unclear]	DATE 10/10/68	
TYPE ACCT CODE	APPROVED BY Loveland	DATE 1968 Oct 9	WORK INSPECTED BY BL	DATE 10-23-68	INVESTIGATION NO. 315-68
2					



REPLACE F.T.C. AND SET TIMING AS FOLLOWS:-

Electro-mechanical

60 SECOND CYCLE FC

RICHMOND	35-G	$\frac{1}{4}$	R	R	Y
LEHIGH	R	R	18-G	$\frac{1}{3}$	R

SET LEAD:-

S.O.G. FOR RICHMOND SAME WITH
 " " " AT ~~CUMBERLAND~~ ST.
 CUMBERLAND

55-59-62-93-97-0

*confirmed as correct timing as of 4/13/04
 & 2*

CONTROLLER:- ~~58-65-95-0~~ PCN 100-8-29-79 (RECORD)

WORK ORDER S33069		Richmond Street and Allegheny Ave.															Traffic Engineering District # 3										
SIGNAL		Prepared by <i>[Signature]</i>					Date 3/27/12					WORK COMPLETED BY <i>[Signature]</i>					Date 7/10/2012					Release date					
		Approved by <i>[Signature]</i>					Date 3/27/12					INSPECTED BY <i>[Signature]</i>					Date 7/10/2012										
		4+8+P4+P8 Allegheny Ave. & Allegheny Ave. Ped.					2+6+P2+P6 Richmond Street & Richmond St. Ped.					* P2+P4+P6+P8 Allegheny Peds. & Richmond Ped. * (Actuated)											Extension				
#	Phase Movements																Minimums			Maximums							
		1	2	3	4	5	6	7	8	9								Flash	G	M	FH	G	M	FH			
2	NB Richmond Street	R	R	R	G	Y	R	R	R	R								R									
5																											
6	SB Richmond Street	R	R	R	G	Y	R	R	R	R								R									
1																											
4	EB Allegheny Ave.	G	Y	R	R	R	R	R	R	R								Y									
7																											
8	WB Allegheny Ave.	G	Y	R	R	R	R	R	R	R								Y									
3																											
P2 P6	Crossing Allegheny Ave.	H	H	H	H	H	H	M	FH	H								OFF		7	11						
P4 P8	Crossing Richmond St.	H	H	H	H	H	H	M	FH	H								OFF		7	5						
	Program 1 Non-Actuated	50	3.7	2.3	28	3.4	2.6											90	secs								
	Program 1 Actuated	39	3.7	2.3	18	3.4	2.6	7	11	3								90	secs								
	Program 2 Non-Actuated	60	3.7	2.3	48	3.4	2.6											120	secs								
	Program 2 Actuated	49	3.7	2.3	38	3.4	2.6	7	11	3								120	secs								
Time of Day Plan																											
																		Event	Day	Time	Cycle	Offset	Plan	Remarks			
																		1	1-7	0:00	90	87	1				
Instructions		Install timings.Offsets Referenced to Beginning of Yellow, Phase 4+8																									

TE SHOP